

ROYOP

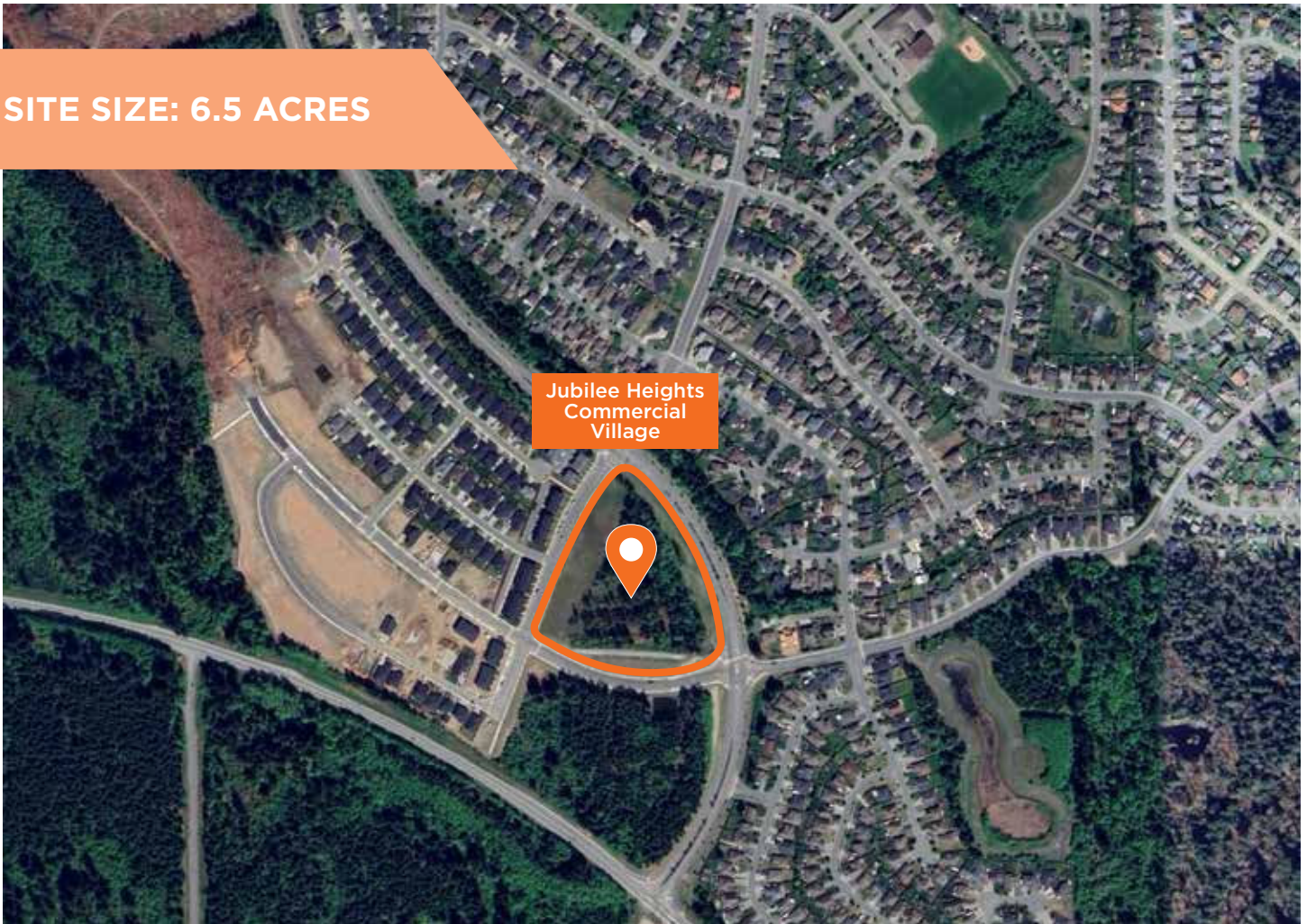
R

# Jubilee Heights Commercial Village

608 Beaver Creek Blvd, Campbell River, British Columbia

COMING SPRING 2027 | PRE-LEASING TODAY

SITE SIZE: 6.5 ACRES



## SITE INFO

Located within Jubilee Heights - a brand-new master planned community comprising 165 acres of residential and commercial development - this site is poised to become the primary retail and service hub for South Campbell River. Strategically positioned along the high-traffic Dogwood Street corridor, the development offers seamless access to Jubilee Parkway and Inland Island Highway, ensuring high visibility and convenient connectivity to surrounding neighbourhoods and key regional routes.

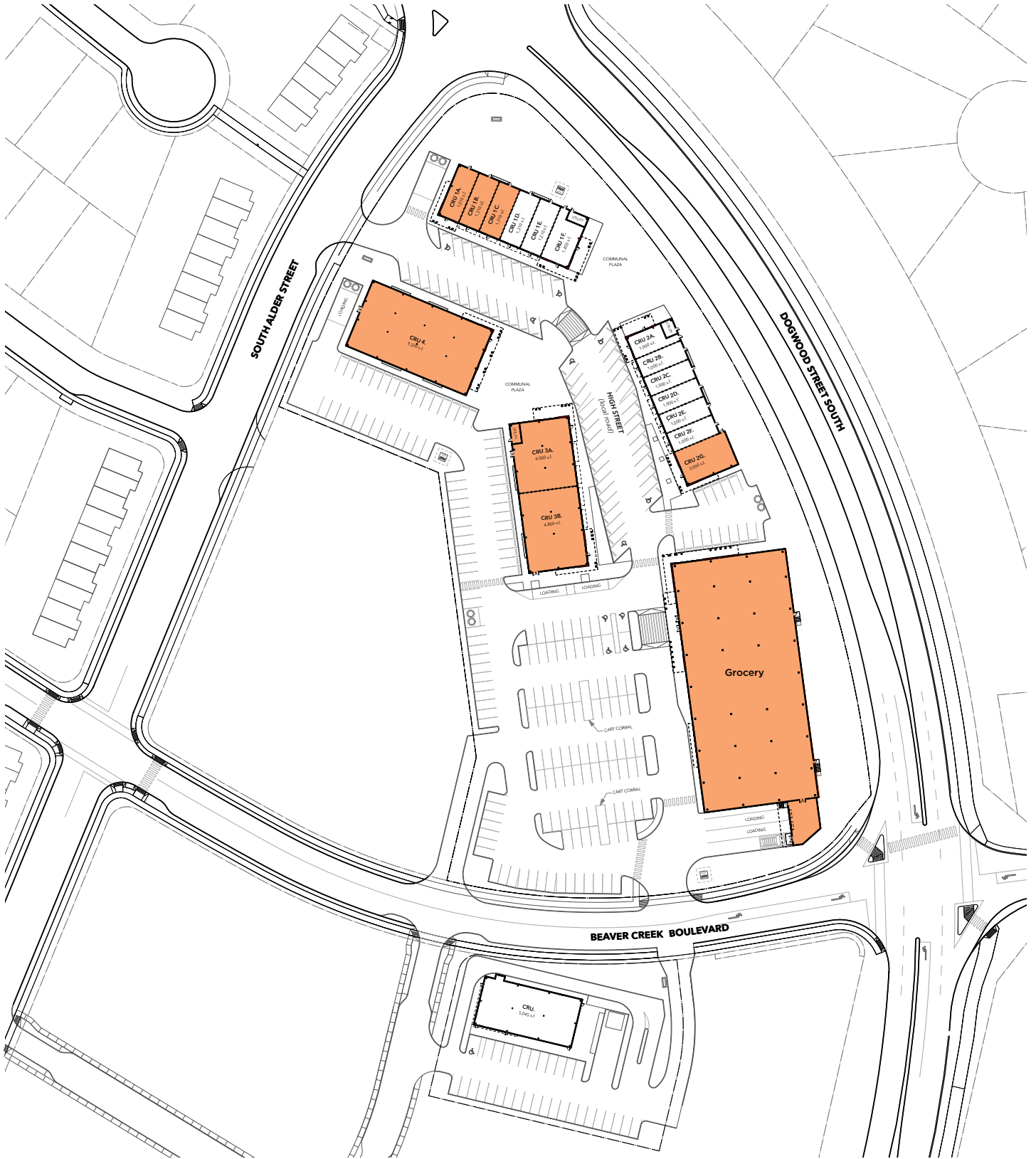
## LEASING CONTACT

**Ben Cowie** Leasing Manager, Associate

403.926.5779 | [bcowie@royop.com](mailto:bcowie@royop.com)

**Royop Development Corporation**  
510 211-11th Avenue SW, Calgary, AB

**SITE PLAN**



Our rich history spans 60 years in Western Canada.  
Royop is a leader and expert in development and management.  
Our leasing strategy is proven to retain and attract best-in-class retailers to our centres.  
We develop and manage mixed use projects.